



## First Nations Forests and Ecosystem Services

Chief Harry St Denis  
NAFA Meeting March 08 2018  
Ottawa Ontario

# Wolf Lake Overview

Our approach to forest conservation and ecosystem services through home grown cultural and political actions.

Where possible drawing on a supportive policy and legislative environment or not.

Actions to improve local forest ecosystems and community well being. Reconciliation must address relations with forests waterways and wildlife.



*Remembering and Practicing the Knowledge of the Ancestors*



*Willaim Commanda*

# Reconciliation

Integrating Indigenous Eco-system Knowledge into Science Based Forest Management Platforms for Community and Eco-system Benefits  
Exercising Traditional Customary Law and Duty of Care

# Ecosystem Services Development

- For several years, WLFN has prioritized long-term strategies to restore ecosystem health and economic alternatives to intensive resource extraction industries with the potential to:
- Restore levels of ecosystem functioning and biodiversity of the territory to promote species and traditional knowledge resilience in changing conditions;
- Provide alternative employment and training opportunities to the growing Algonquin youth population that may not complete highschool; and
- Expand environmental stewardship opportunities that reflect and strengthen Algonquin cultural values, with climate change mitigation benefits and possible economic opportunities

# Reconciling they Broke Connection





## Traditional Ecological Knowledge

- Algonquins had a network of relationships with land, water, plants, and animals, expressed through culture and integrated into customary laws.

# Building Partnerships

WLFN is actively building partnerships and relationships with like minded communities and institutions to advance our traditional knowledge and rekindle our management role on the territory.



# Forestry Industry Planning



- In 2004, in an effort to improve the sustainable use and bio-diversity of its remaining forest and watershed resources WLFN began implementation of forest conservation based resource plans.
- The plans were initially designed to assist the community harmonization against the large-scale timber interests on the territory and promote conservation of key watersheds that supported members traditional use as well as WLFN tourism development efforts. This has since expanded to protecting species at risk.





## The Maganasibi

- *WLFN had successfully prevented the core area of the watershed from being logged in 2007*

# Matching Research Objectives

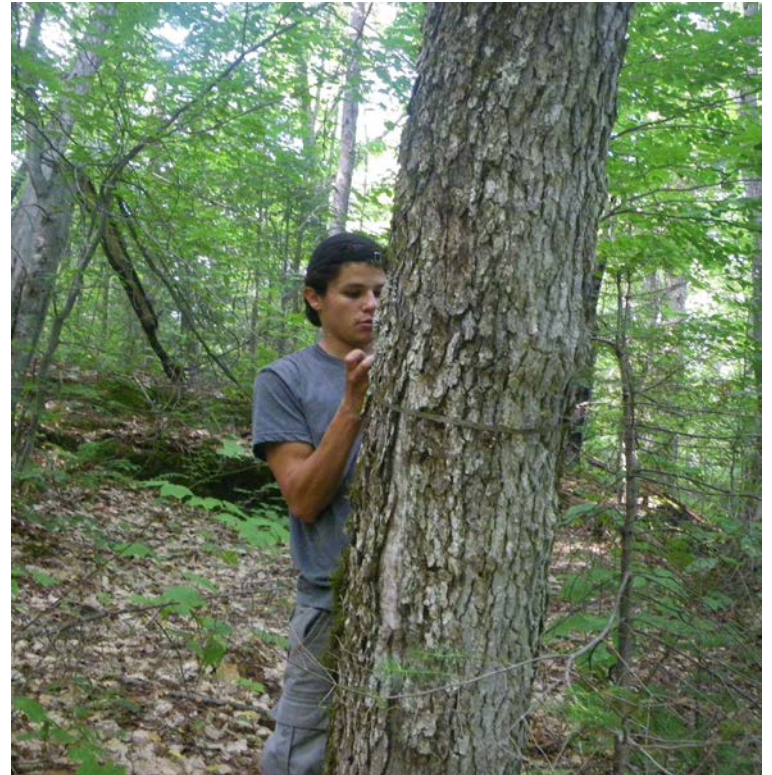
- Working with University of Toronto in the protected area on how to express traditional Algonquin knowledge and eco-system values into modern day forest harmonization policy platforms.
- Reconnect Anishnabe youth to their traditional knowledge and science based forest ecology study methods.



# Youth/elder knowledge transfer



# Youth employment and mentorship



# Significance of the research:

- Rise of modern forestry predicted on making FN populations less relevant than central authorities
- Reduced the culture and identity of the people, dismantled our management systems
- FN forest lands and resources have been limited to economic forestry attributes measured from a far in central system models
- Now we can quantify TEVs and move them up into the modelling system. Modelling for other constants other than forest age, species and distance from mill. Legally we can create withdrawals that can aggregate as conservation forest offset projects.



# Setting Long Term Priorities

Prioritizing home grown solutions in terms of both climate change and maintaining global biodiversity targets over resource-extractive economics associated with "growth".



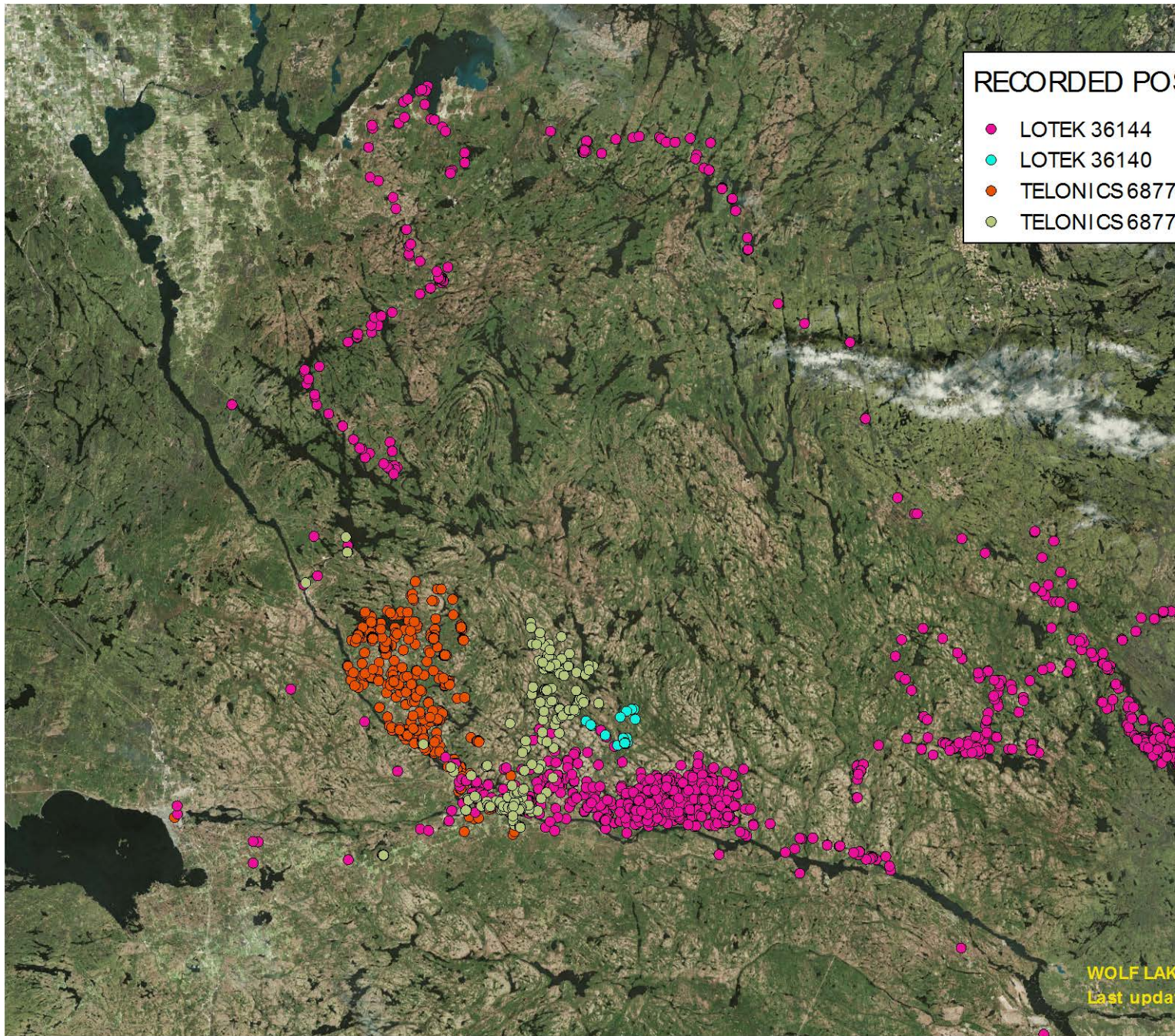
# Flagship Project

Managing Species at Risk  
[www.algonquineasternwolf.com](http://www.algonquineasternwolf.com)

# Trapping, Collaring and DNA Profiling in Maganasibi Watershed







# Corridors and Protection

- Creating wolf conservation boundaries that reflect ecosystem and population processes and patterns, providing sufficient area, habitat diversity, and complexity for continued self-organization and self-maintenance.
- Advocating for protection of the species and a Quebec Management Plan
- Payments for eco-system services





# Algonquin Ecosystem services

- Restoring nature and traditional knowledge based solutions. Working on the ground redeveloping communities through cultural reclamation protecting forests and on-going relationships with the forest waterways and animals.

# Launching Indigenous Platform for Public Support and Education



churchillnorthernstudiescentre

- ABOUT**
  - The Centre
  - Our Staff & Board
  - The Churchill Area
  - Volunteers
  - Contact
- FOR RESEARCHERS**
  - Guide to Research
  - Fees
  - Funding Opportunities
  - Projects
  - Research Papers
- FOR LEARNERS**
  - School Programs
  - Learning Vacations
  - University Courses
  - Conferences & Meetings
  - Newsletters



## BIODIVERSITY

The Centre is ideally situated along the Hudson Bay seacoast at the meeting of three major biomes: marine, northern boreal forest, and tundra. To the east lies Wapusk National Park which protects the inland denning area of the polar bear.

[Read more about the Churchill area](#)



### Churchill Northern Studies Centre

Subarctic research and education since 1976

The Churchill Northern Studies Centre provides year-round support to scientists involved in research in the Western Hudson Bay region.

Need to find something?

- [Course Brochure Download](#)
- [Volunteer Link](#)
- [Employment Opportunities](#)
- [Researcher Guidelines](#)

Donate

You can "Donate Now" to the CNSC through Canada Helps. Just click the "Donate Now" button below to see how we can benefit from your generosity.

**DONATE NOW** (CAD)

**AMERICAN DONORS** (USD)

# Chi Meegwetch

Chief Harry St Denis

[harrystdenis@wolflakefirstnation.com](mailto:harrystdenis@wolflakefirstnation.com)

Chi Meegweetch

Mahingan Wolf Stewardship Project

[www.algonquineasternwolf.com](http://www.algonquineasternwolf.com)

