



Indigenous Forestry in Saskatchewan

**MLTC Case Study
Meadow Lake, SK**

March 7, 2018

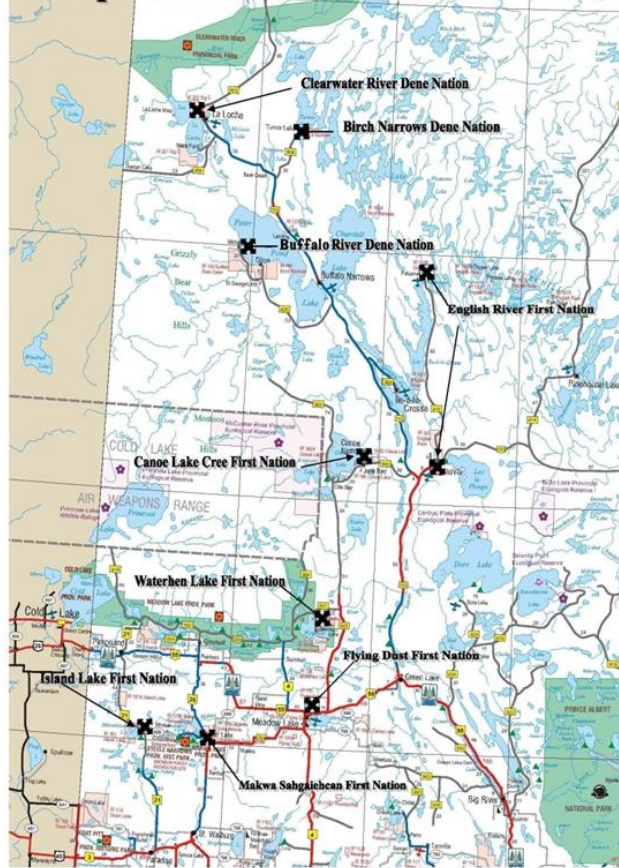
MLTC Industrial Investments LP

Meadow Lake Tribal Council...since 1981



General Description of MLTC

Map of North West Saskatchewan



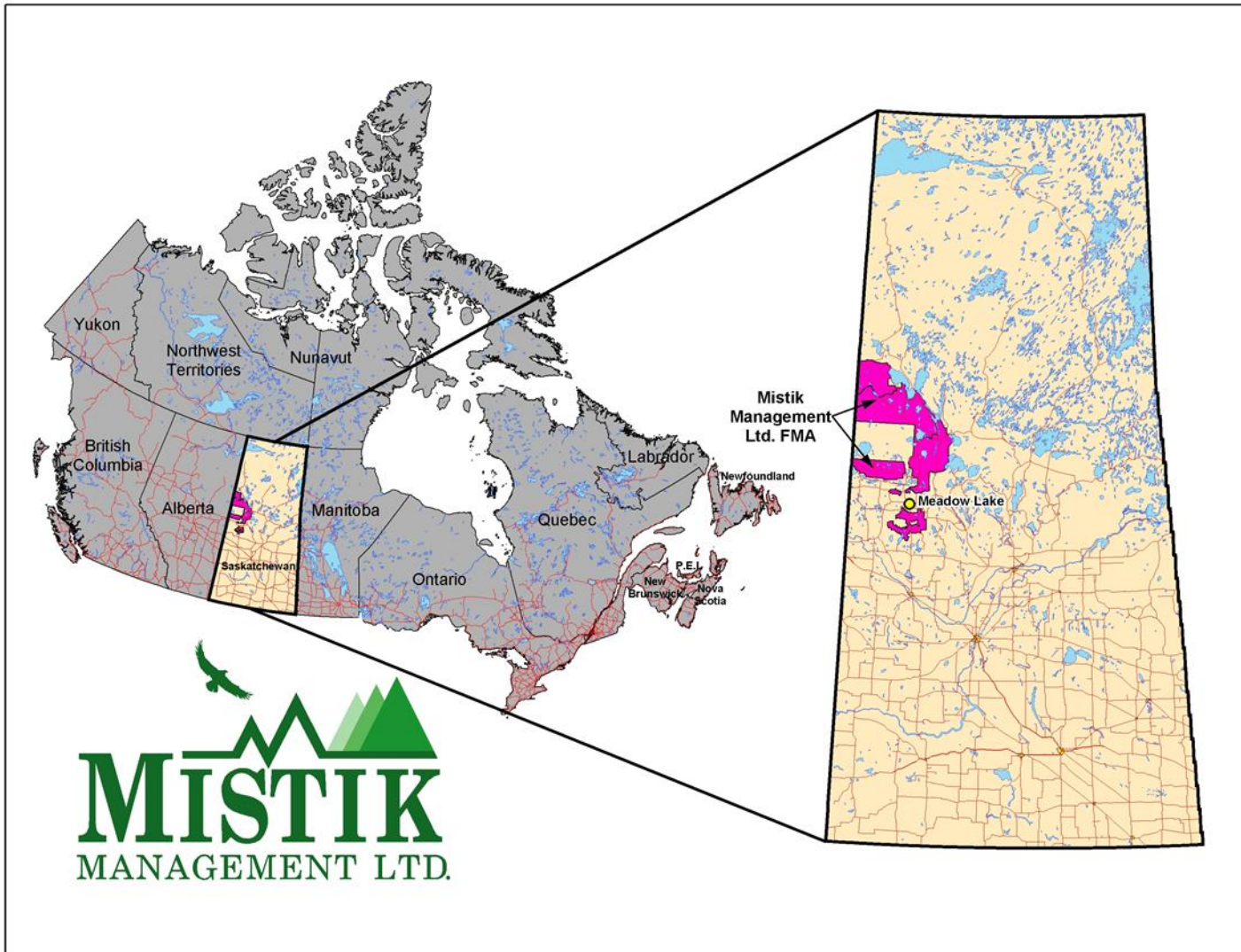
- MLTC is the political, program and service, and corporate organization of nine Meadow Lake First Nations
- MLTC's mission statement is to promote and enhance the well-being and prosperity of our member First Nations
- 9 Meadow Lake First Nation (MLFN) communities
 - MLFNs are signatories to either Treaty 6, 8, or 10
 - 4 Dene and 5 Cree
 - Combined population of approximately 15,000
 - Experience many of the development challenges common to most Canadian First Nations

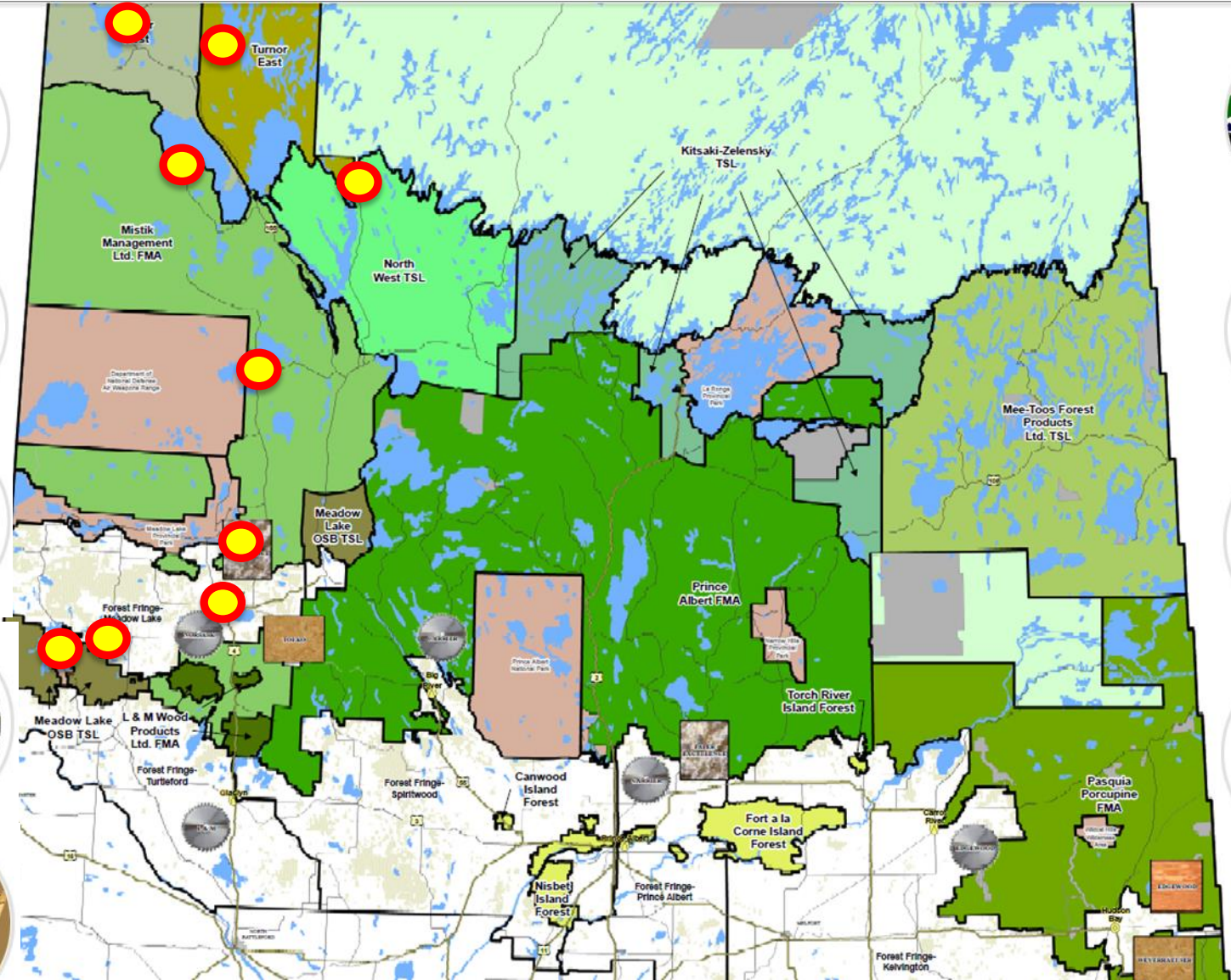
Good Governance - Current Structure

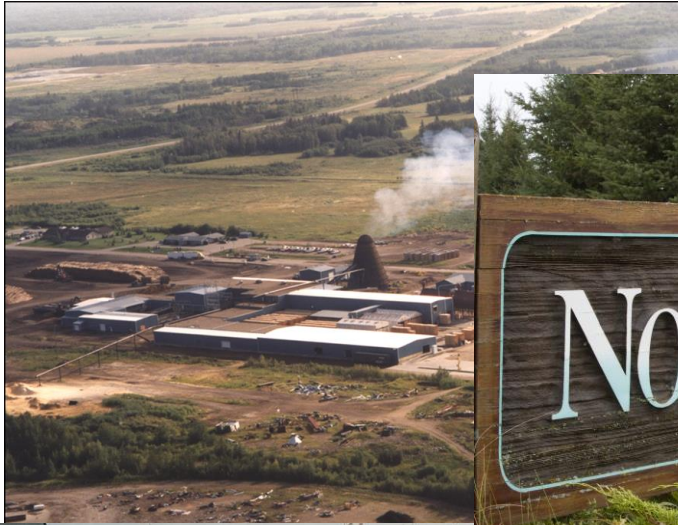
- MLTC operates under the direct control and authority of the 9 MLFN Chiefs and community-based policy boards
 - Education Committee
 - Economic Development Commission
 - Justice Committee
 - Health Authority
 - Child Family Services

Governance structure

Members:	Birch	Buffalo	Canoe	Clearwater	English	Flying Dust	Ministikwan	Makwa	Waterhen
	MLTC (formed under MLTC Convention Act)								
	Nine Chiefs-in-Assembly (representing the Members) create legal entities and approve Bylaws and Governance Policies for those entities								
Legal Entities:	1. MLTC Program Services Inc			2. Meadow Lake Health & Social Development Authority Inc			3. MLTC Child & Family Services Inc		
Advisory Committees:	Brd of Educ	Ec Dev Commission	SA Block Chiefs	Justice					
Directors:	Tribal Chief, Dir of Planning, Dir of Finance			non-voting Chair & Vice-Chair (appointed from Chiefs) and 9 voting FN Health Portfolio Councilors			non-voting Chair & Vice-Chair (appointed from Chiefs) and 9 voting FN Health Portfolio Councilors		
Officers:	President-Tribal Chief, Secretary-Dir of Planning, Treasurer-Dir of Finance								
Senior Mgt:	Tribal Chief, Vice Chief, Dir of Programs, Dir of Planning, Dir of Finance								
Exec Mgt:	Director of Planning	Director of Finance	Director of Programs						
Prog. Mgt:		SA Co-ord.	Various Program Dirs.	Director of Health			Director of CFS		









MLTC RDI

Tribal Chief

1 rep from each of the 9 bands

2 independents (MLTCII board members)



MLTC Industrial Investments Board (2013)

7 independent board members (appointed by MLTC RDI)

MLTC Vice Chief and MLTC Director of Finance (*ex officio*)

MLTC RDI Executive Committee (observers)

MLTC Executive Director (observer)

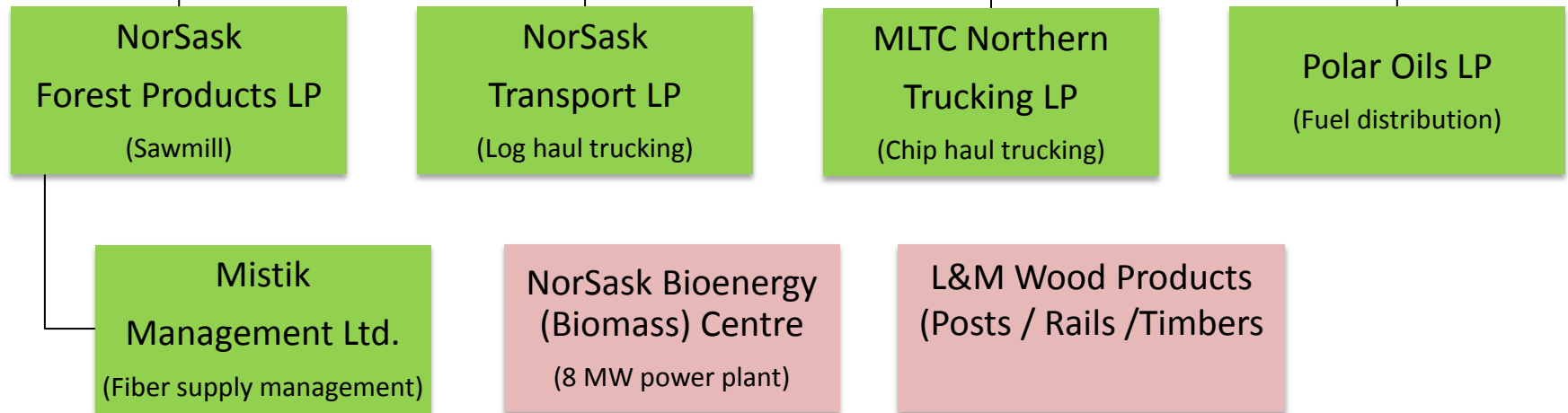
Board chair is elected by directors



Businesses local to Meadow Lake

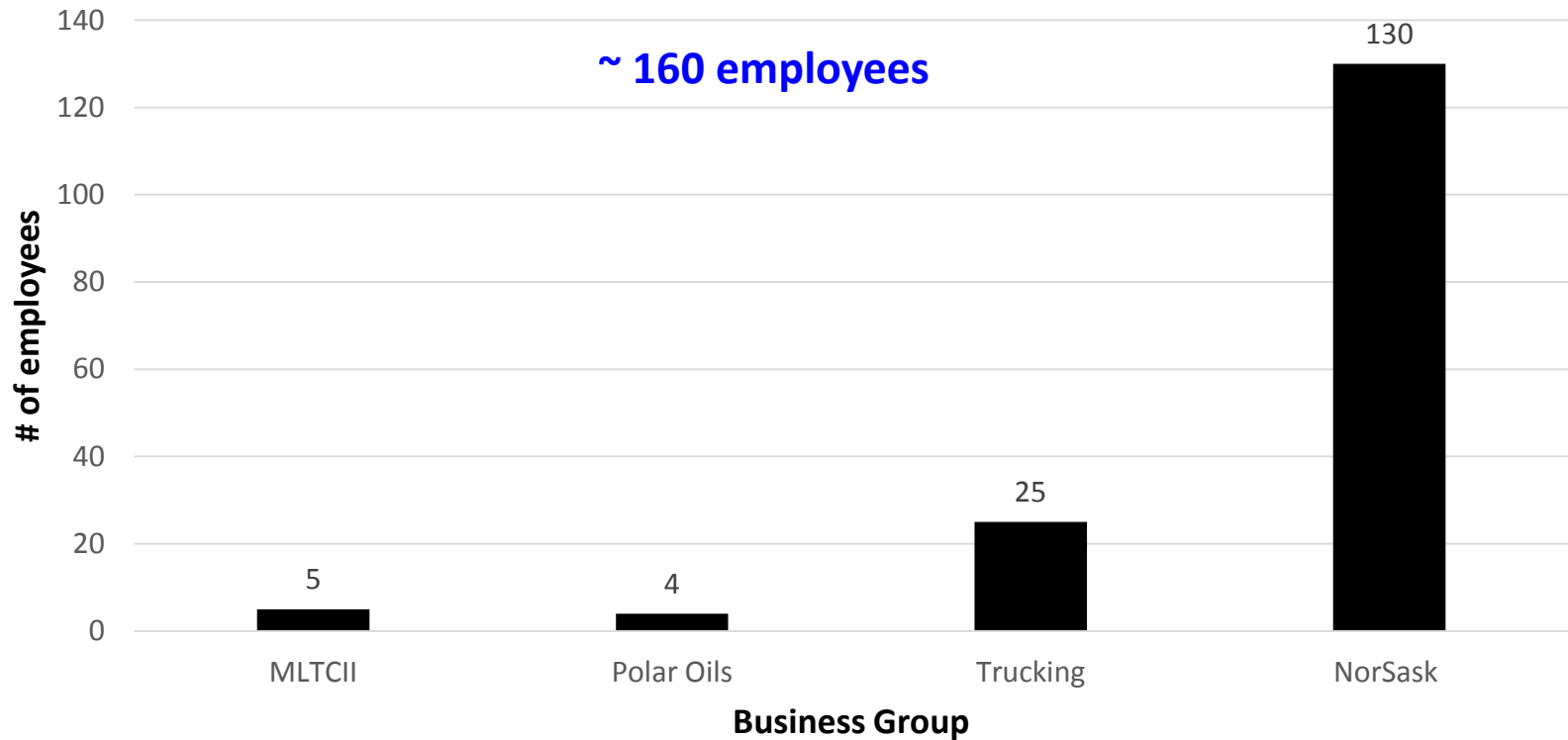
MLTC Industrial Investments LP

(Executive / Administration)

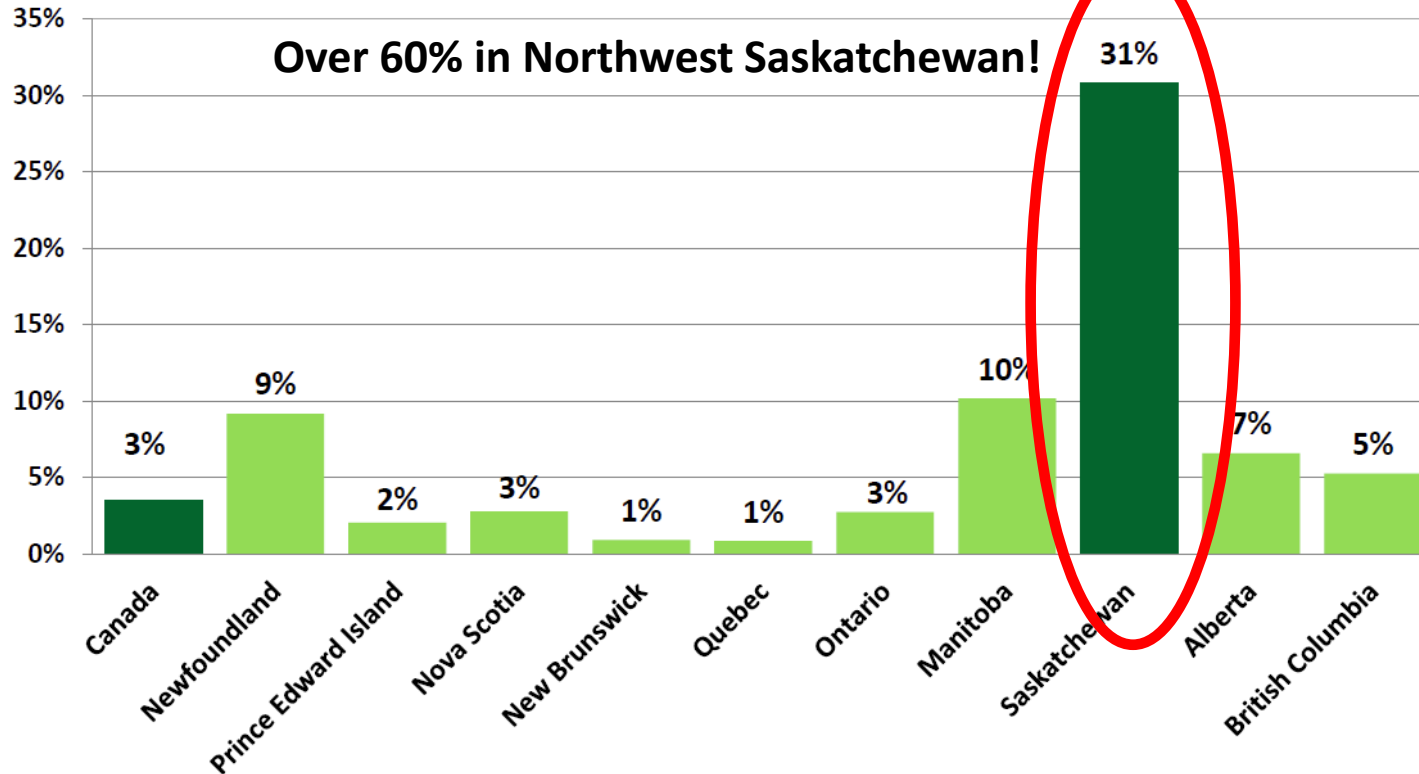


Human Resources

Employment at MLTCII Businesses



Aboriginal Forestry Employment Relative to Total Forestry Employment



Source: Statistics Canada (2014)

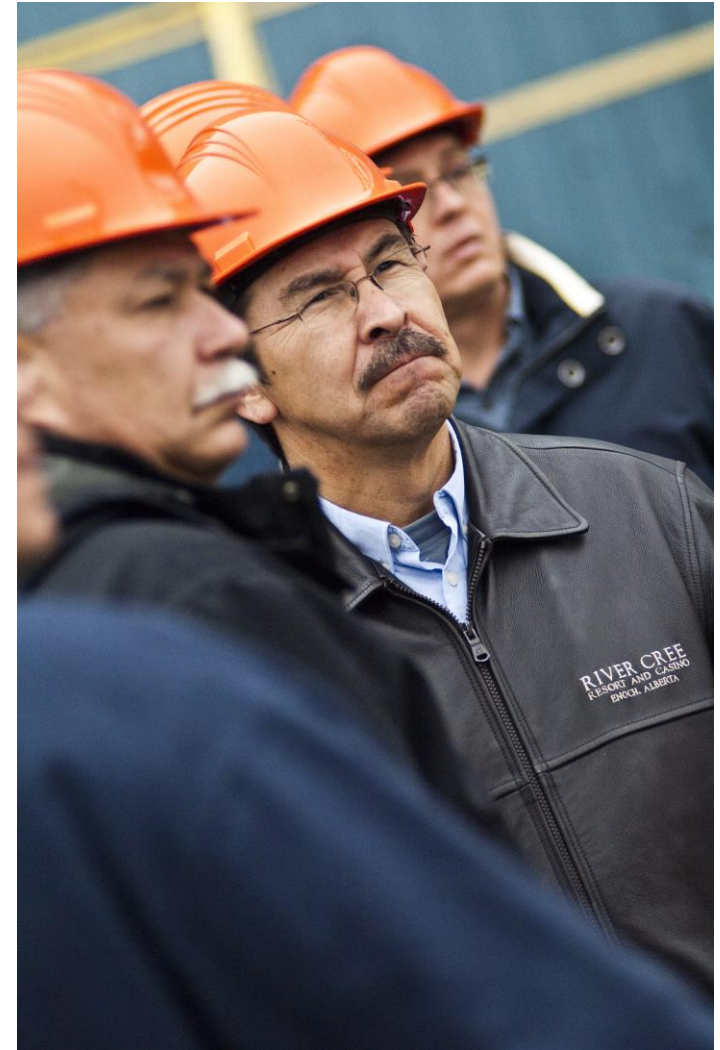
Note: Data was suppressed in some provinces due to Aboriginal employment below minimum Stats Can sample thresholds. Therefore NL, PEI, NS, QU, ON and AB, Aboriginal employment was estimated by SK based on weighted share of provincial Aboriginal population applied to remainder of Canadian Aboriginal forestry employment.

saskatchewan.ca

NorSask Forest Products LP



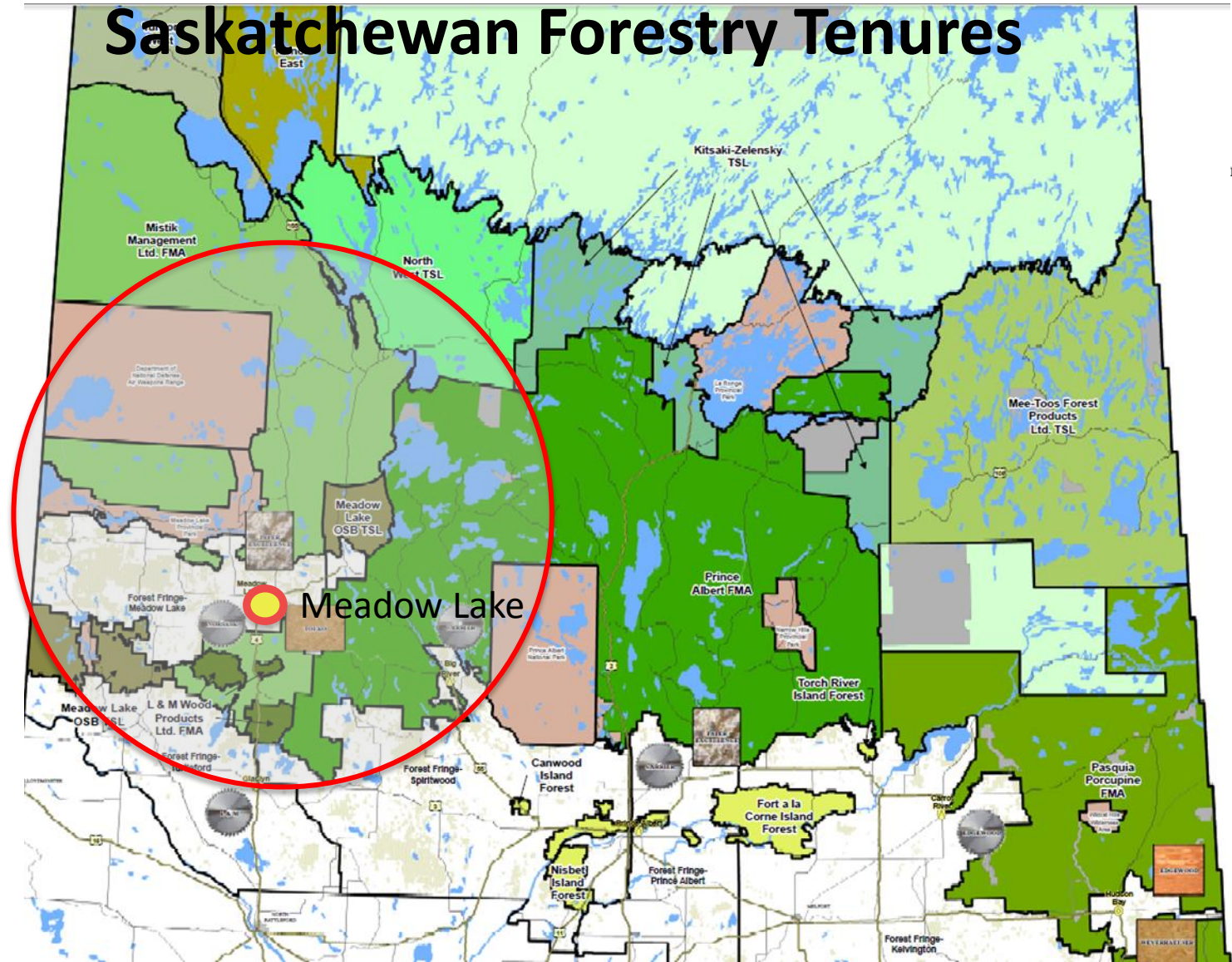
100% Indigenous-owned
1998 - 2018



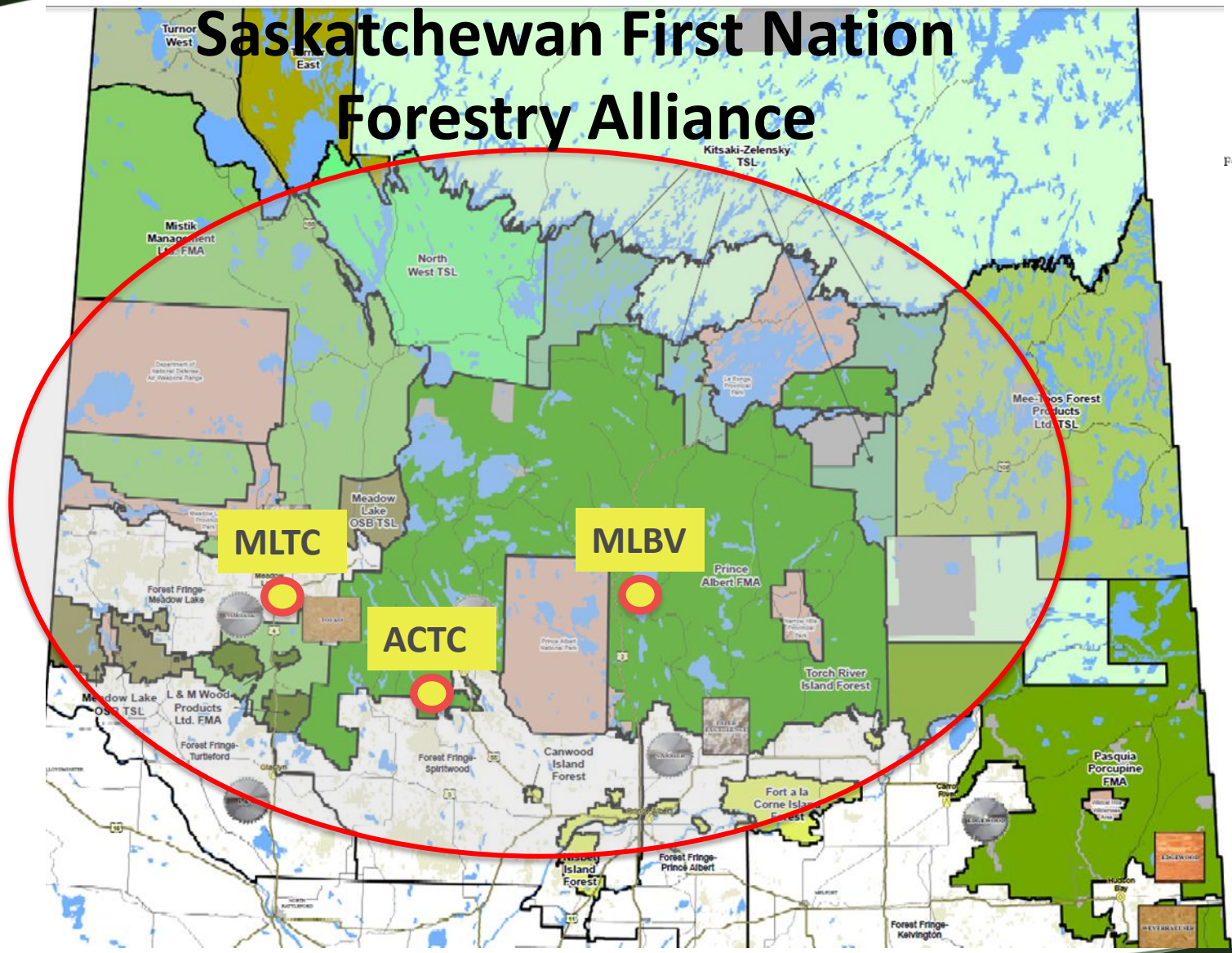
Saskatchewan Forestry Tenures

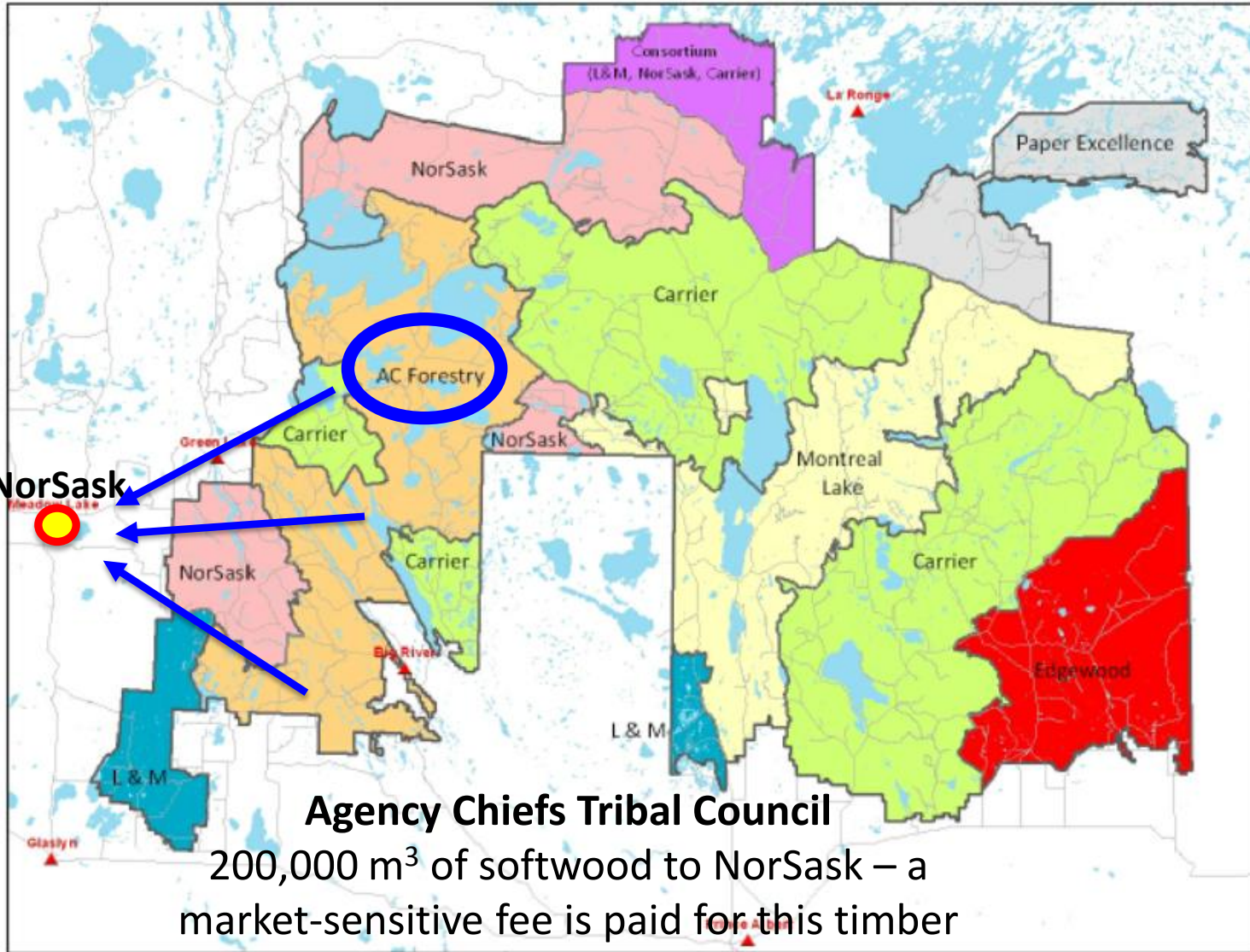


NORSASK
FOREST PRODUCTS INC.



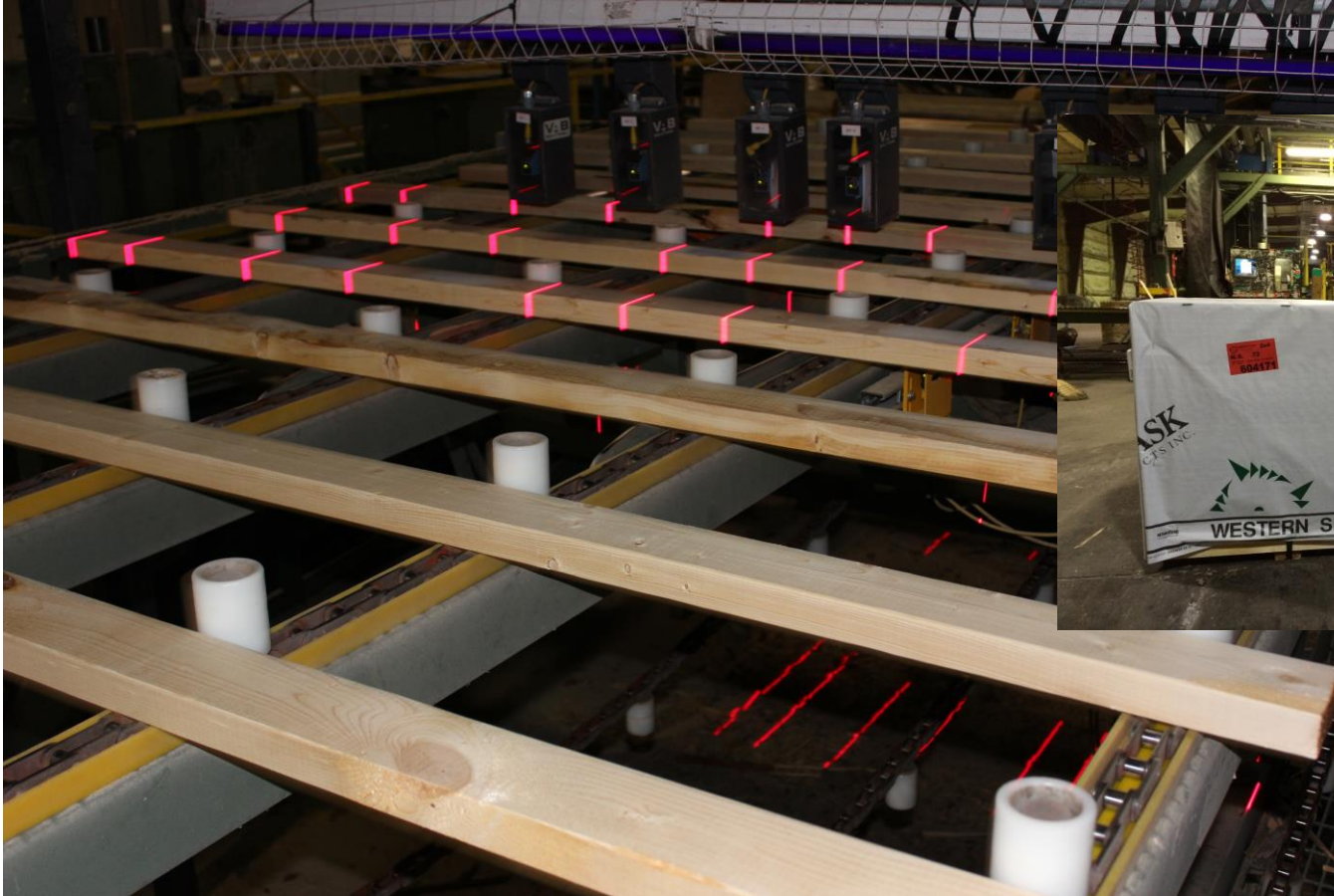
Saskatchewan First Nation Forestry Alliance





Product

Quality stud lumber 8' & 9' 2x4 / 2x6

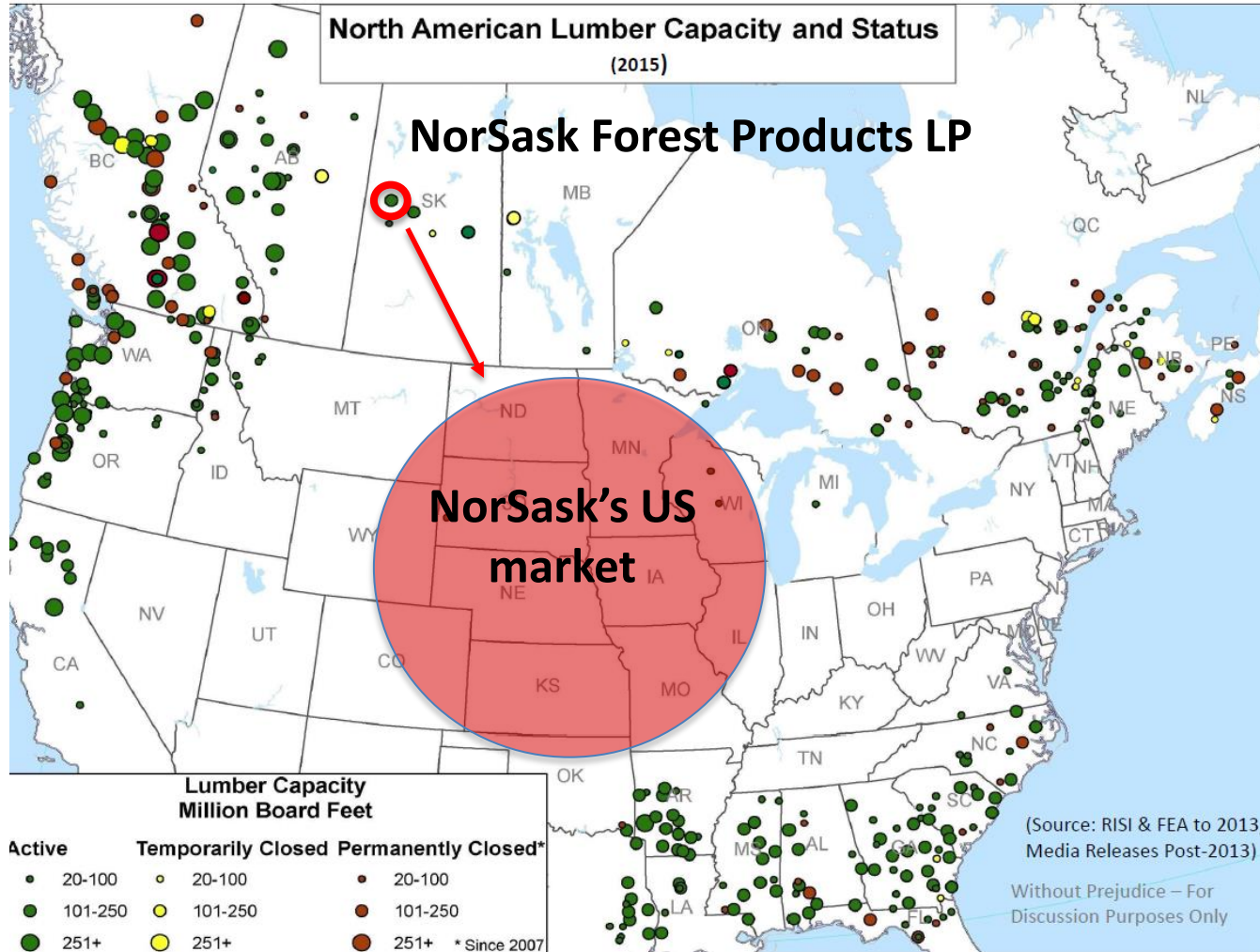


Shipping

**A quality lumber product
...shipped 100% by truck across North America**



US market



Indigenous producers

Ongoing Softwood Lumber Dispute(s)

Ottawa!

1. 'Indigenous producer exclusion'

Keep Indigenous lumber producers out of the softwood lumber dispute

– and in the mean time –

2. 'Indigenous producer protection'

Ensure that Indigenous lumber producers are protected from all softwood lumber tariffs



Factors affecting profitability

- Selling price of lumber
- CAN/US exchange rate
- Mill production
- Mill maintenance
- Log cost
- Log diameter
- Log quality
- Log tree species
- Log availability
- Chip sales
- Weather
- Human resources
- Unanticipated events



NORSASK
FOREST PRODUCTS INC.

- = Employment
- = Shareholder dividend (\$)
- = Future investments opportunity

MLTCII exploring a major capital upgrade to NorSask



MLTC Industrial Investments LP